



Researching your competitors, suppliers, customers or partners has never been easier. Use Companies / Markets to streamline the way you analyze a company through market data, interactive charts, financial statements and more.

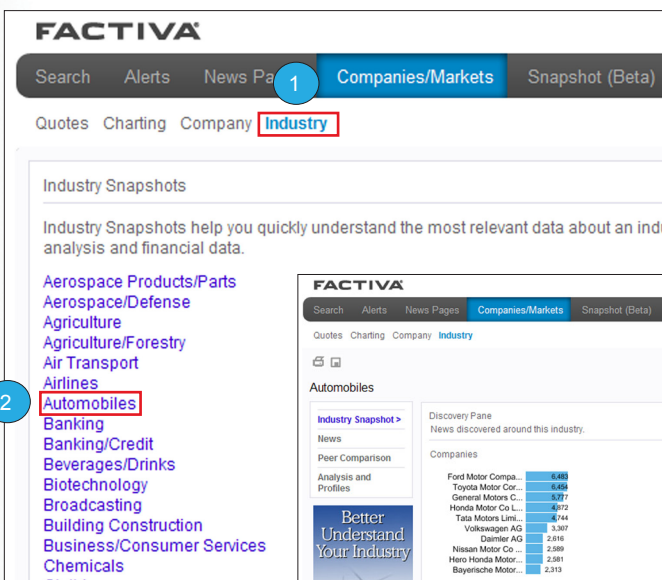
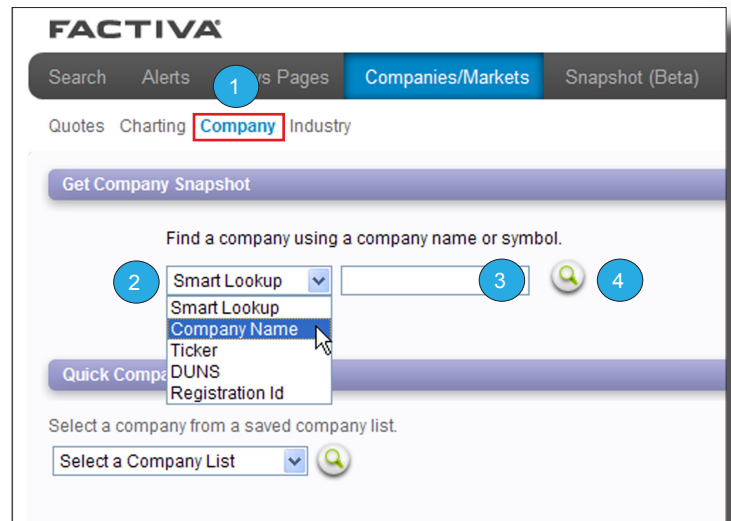
### Retrieving a Company Snapshot

#### By Company Name

- 1 Click **Company** from the Companies / Markets menu.
- 2 Select **Company Name** from the drop-down menu.
- 3 Enter the company name in the text box.
- 4 Click .

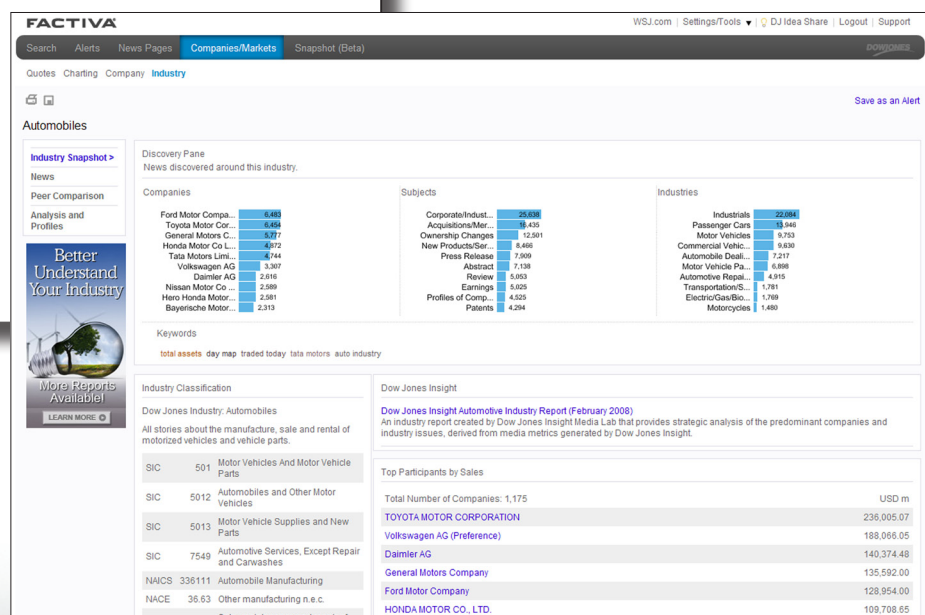
#### By Ticker

- 1 Click **Company** from the Companies / Markets menu.
- 2 Select **Ticker** from the drop-down menu.
- 3 Enter the company symbol in the text box.
- 4 Click .



### Retrieving an Industry Snapshot

- 1 Click **Industry** from the Companies / Markets menu.
- 2 Click the name of an industry to display the Industry Snapshot.

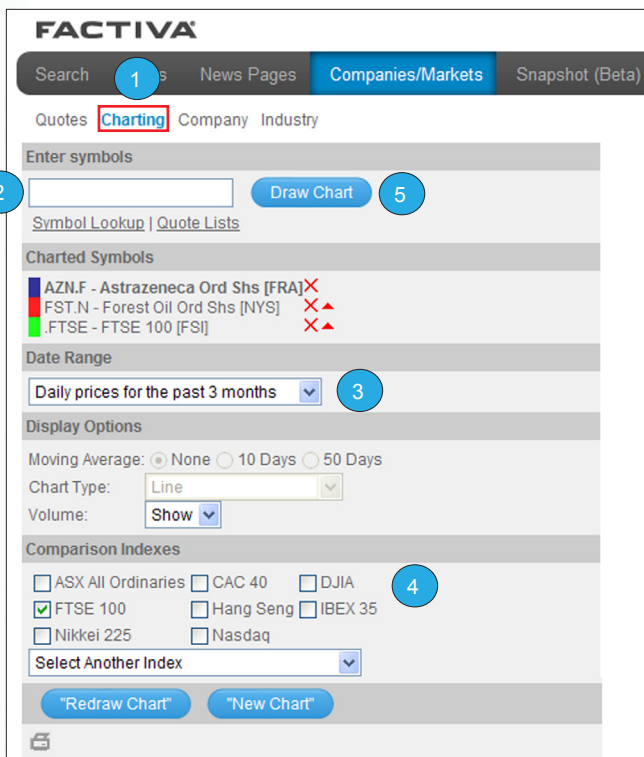
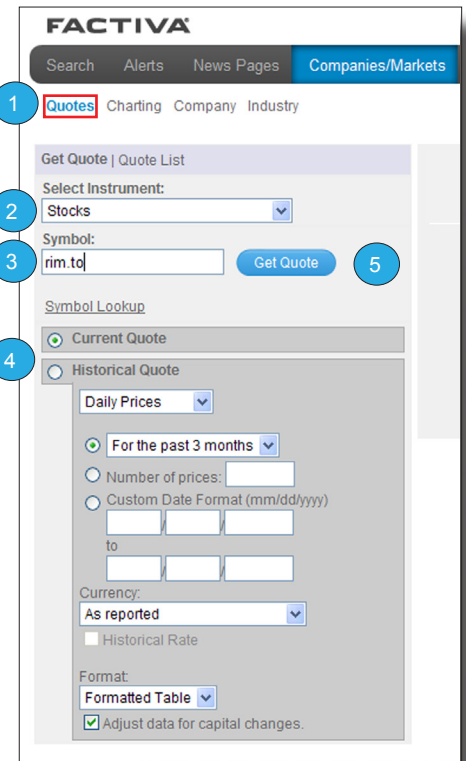


Get current and historical pricing on a variety of financial instruments including stocks, funds, currencies, and market indexes. Then use the Charting area to get a graphical view of the numbers.

## Retrieving Stock Prices

- 1 Click [Quotes](#) from the Companies / Markets menu.
- 2 Choose [Stocks](#) from the Select Instrument drop-down menu.
- 3 Enter up to 20 symbols separated by spaces. If you do not know the stock symbol, click [Symbol Lookup](#).
- 4 Select [Current](#) or [Historical Quote](#).
- 5 Click [Get Quote](#).

Tip: If you have selected the [Formatted Table](#) display format, you can quickly retrieve an Interactive Chart. Simply click on the thumbnail chart or the [Get Interactive Chart](#) link.



## Get an Interactive Chart

- 1 Click [Charting](#) from the Companies / Markets tab.
- 2 Enter up to 20 symbols separated by spaces. If you do not know the stock symbol, click [Symbol Lookup](#).
- 3 Choose a [Date Range](#) and [Display Option](#).
- 4 (Optional) Check the box next to one or more market indexes under Comparison Indexes to benchmark your chart against it.
- 5 Click [Draw Chart](#).

**Need More Answers?** Log in to **Factiva** and click Support in the upper-right-hand corner for more answers, faster.